

どうやってするんですか

Doo yatte surun desu ka

How do you do it?



Today's Skit

かいと 海斗 : おみくじだよ。 This tells your fortune.

Kaito Omikuji da yo.

タム : どうやってするんですか。 How do you do it?

Tam Do^o yatte suruⁿ de^su ka.

かいと 海斗 : はこ ふ 箱を振ってみて。 Try shaking the box.

Kaito Hako o futte mi^{te}.

タム : ほん 3番です。 Number three.

Tam San-ban de^su.

みこ 巫女 : はい、どうぞ。 Here you go.

Maiden Hai, do^ozo.

かいと 海斗 : だいきち あ、大吉だ。 Oh, it's a daikichi.

Kaito A, daikichi da.

タム : だいきち だいきち? どういう意味ですか。 Daikichi? What does that mean?

Tam Daikichi? Do^o iu i^{mi} de^su ka.

はる : うんせい とてもいい運勢ですよ。 It means your fortune is very good.

Haru Totemo iⁱ uⁿsee de^su yo.

Vocabulary

おみくじ fortune-telling slip
omikuji

ふ 振る shake
furu

どういう what kind of
do^o iu

どうやって how
do^o yatte

どうぞ here you are
do^ozo

い み 意味 meaning
i^{mi}

はこ 箱 box
hako

だいきち 大吉 great luck
daikichi

うんせい 運勢 fortune
uⁿsee

Key Phrase

どうやってするんですか。

Do^o yatte suruⁿ de^su ka.

How do you do it?

To ask how to do something, such as when you're doing it for the first time, say "Doo yatte -n desu ka." "Doo yatte" means "how." You use "-n desu ka" when you don't understand something and want an explanation. It comes after the verb's dictionary form.

Use It!

すみません。これ、どうやって^た食べるんですか。Sumimaseⁿ. Kore, do^o yatte tabe^run de^su ka.そちらのたれにつけて、お召^めし上^あがりください。Sochira no tareⁿi tsu^kete, omeshiagari kudasaⁱ.

Excuse me. How do I eat this?
Please dip it in that sauce and eat it.

Try It Out!

すみません。どうやって～んですか。

Sumimaseⁿ. Do^o yatte ~n de^su ka.

Excuse me. How do I XXX?

① **これ**
kore
this

^{つか}**使う**
tsukau
use



② **着る**
kiru
wear



Bonus Phrase

どういう意味^{いみ}ですか。Do^o iu i^mi de^su ka.

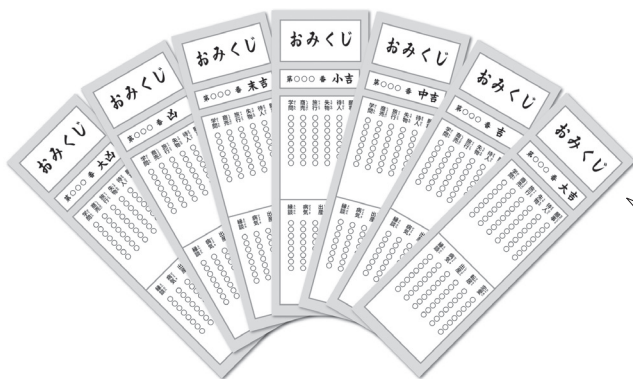
What does that mean?

It's used when you don't understand what was said and want to know what it means.



Omikuji: Trying Your Luck !

You can draw “omikuji” at shrines and temples. They usually have your fortune written on long, narrow slips of paper. Fortune includes “daikichi” or “great luck,” “kichi” or “good luck,” and “kyoo” or “bad luck.” They also give advice about daily life, including health, work, and romance.



だいきち
大吉 : daikichi

=great luck

きち
吉 : kichi

=good luck

きょう
凶 : kyoo

=bad luck

If you draw an “omikuji” with bad luck, some believe you can change it to good luck by tying the slip to a tree branch or some other designated place on the grounds.



- Answer ① すみません。これ、どうやってつかうんですか。
 ② すみません。どうやって着るんですか。

Sumimase'n. Kore, do'o yatte tsukau'n de'su ka.

Sumimase'n. Do'o yatte kiru'n de'su ka.