

# JapanLifeGuide

NHK WORLD-JAPAN

## CHIBA



落花生どーもくん

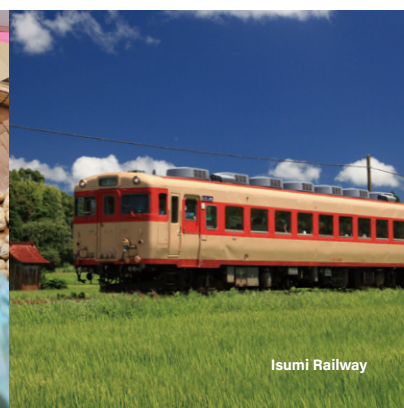
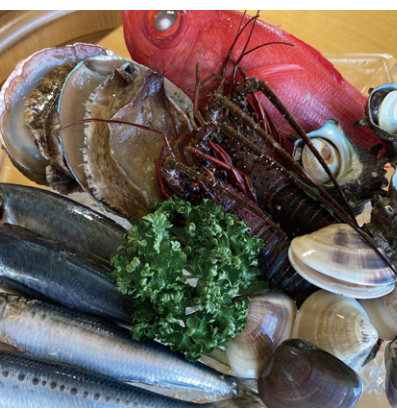


©NHK-dwarf

What's  
Chiba like?



Where do  
I go when  
I need help?



Isumi Railway

## Places to Go

These are the must-sees of Chiba Prefecture.



### Tojo-tei House

This house was built by Tokugawa Akitake, the brother of the last shogun of the Edo period. He is known for bringing back new Western customs and technology after attending the 1867 Paris Exposition.



### Boso-no-Mura

This museum showcases full-scale replicas of samurai houses and other buildings that made up a typical town during the Edo period. Visitors can also experience the traditions of the region, such as making sushi rolls, soba noodles and Japanese candles.



### Mihama-en Japanese Garden

Mihama-en is a traditional Japanese garden inside Makuhari Seaside Park, located in Makuhari New City. The garden is full of seasonal flowers and even has a tearoom where you can enjoy matcha and traditional sweets.



### Mt. Nokogiri

This 329-meter mountain is named after its unique, saw-like shape, which is said to be the result of mining high-quality Boshu Rocks.



### Kujukuri Beach

Selected as the surfing venue for the Tokyo Olympics in 2021, this beautiful white sand beach extends 66km along the Pacific Ocean.



### Takabe Shrine

This shrine, dedicated to the deity of cooking, is known for its triannual knife ceremony. It's a tradition that has lasted for a millennium, in which fish is prepared using only a knife and chopsticks.

# CHIBA

# ちば

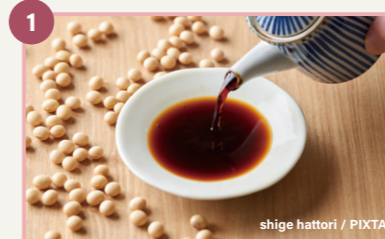


NHK WORLD JAPAN Scan the QR code to watch videos on Chiba



## Things to Eat

Chiba Prefecture offers a wide array of local dishes and delicacies!



### Soy Sauce

Noda has a long history as a fine producer of soy sauce, dating back more than 450 years. The city is especially known for the darker koikuchi variant with a simple but stunning flavor.



### Unagi

Many restaurants around Naritasan Shinshoji Temple are known for unagi (Japanese eel). Establishments in the area have long offered the delicious fatty fish as a nutritional meal for pilgrims visiting the temple.



### Kuro Ajillo

Chiba's take on al ajillo, a Spanish dish made by cooking ingredients such as seafood and garlic in olive oil. The local variant is flavored with soy sauce, a condiment with strong ties to Chiba, and combines vegetables and seafood harvested in the prefecture.



### Hakarime

Anago (conger eel) caught off the coast of Futtsu is known as hakarime. Anago and unagi are both eels, but they grow up in different environments, in the sea and rivers, respectively. They are also used in different kinds of dishes.



### Hama-Yaki

Fresh fish and shellfish grilled on an open flame. It's one of the best ways to enjoy clams, sardines, sea snails, spiny lobsters and other seafood from off the coast of Kujukuri.



### Namerou

This dish was invented by fishermen as a way to enjoy their fresh catch while still at sea. It is prepared by finely chopping fish such as horse mackerel and mixing it with miso, spring onions and ginger into a sticky paste.



# What's Chiba Like?

We asked study-abroad students in Chiba



I love how it's filled with nature.



It has such a calming atmosphere, even though Tokyo's close by on the train.



I know! It has both peaceful nature and the convenience of urban cities.



And aren't the cities very safe? I go out biking a lot, but I never feel unsafe because the roads are wide and the cars drive responsibly.

## Sad Points

### Speak up, Chiba!



I know. It's the same in India, haha! It's a shame because there are a lot of great things about Chiba.



I was worried before I came here because almost no one in South Korea knows Chiba.



They don't promote themselves enough. There are so many places that could stir a buzz on social media!

We came up with the answers!



**International Students of CHIBA UNIVERSITY and Kanda University of International Studies**

From all around the world, including the United States, India, South Korea, Guatemala and China.

## Good Points

**A great balance between relaxing atmosphere and convenience!**

## Recommendations

**What activities do you recommend as a resident?**



As someone who enjoys outdoor activities, I'd recommend camping in Kisarazu. You can enjoy fishing in the gorgeous ocean too.



The ocean is definitely a must-go. I love driving along the coast! The seafood is great too.



Oh, the sunsets are gorgeous. You have to check out the view from Inage Beach and Chiba Port Tower.



The ocean is great, but I recommend Mt. Nokogiri. It's perfect for a quick hike.



The well laid out cityscape of Makuhari is nice. There's a big mall there and also a baseball stadium.



Chiba also has places where you can experience the rich heritage of Japan, like old buildings and shrines. I've gotten really hooked... Someday, I want to live in a traditional Japanese house here.



Nice!!

## CHIBA × WORLD

### Narita Airport is the Gateway to Japan

The most number of passengers using international flights in Japan!

**11.69M People per Year**

Twice the population of Chiba Pref.

Source: Ministry of Land, Infrastructure, Transport and Tourism (2022)

### Many People from Abroad Now Live in Chiba Prefecture!

**Total: 182,189**

3% of the population of Chiba Pref.

Source: Chiba Prefectural Government (2022)

|             |        |
|-------------|--------|
| China       | 54,190 |
| Vietnam     | 27,393 |
| Philippines | 20,795 |
| South Korea | 15,383 |
| Nepal       | 10,095 |



# Disasters can occur at any moment.

## Japan Experiences Various Types of Disasters



Earthquake



Tsunami



Typhoon / Heavy Rain

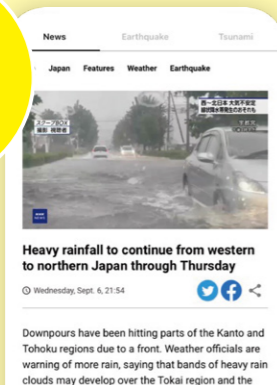
## Protect yourself and others by gathering vital information!



Download the official NHK WORLD-JAPAN app to receive disaster information in 19 different languages.



Download the App!



### Japan's evacuation scale for heavy rain

#### 5-Level Warning System

| Alert Level                         | Action to take               | Guidance from local government | Weather alerts from JMA                    |
|-------------------------------------|------------------------------|--------------------------------|--|
| 5                                   | Secure safety immediately    |                                | Emergency warning                          |
| DO NOT WAIT FOR LEVEL 5 TO EVACUATE |                              |                                |  |
| 4                                   | All must evacuate            | Evacuation order               | Landslide alert info. etc.                 |
| 3                                   | Elderly people must evacuate | Evacuation info.               | Rain / flood / storm surge warnings etc.   |
| 2                                   | Check evacuation procedures  | —                              | Rain / flood / storm surge advisories etc. |
| 1                                   | Check latest info.           | —                              | —  |



Chiba has experienced major disasters over the years

#NHK BOSAI



### Free Wi-Fi: 00000JAPAN

Five Zero Japan (00000JAPAN) is a public wireless LAN service that's only available during disasters. Please be aware of security risks when using this service, as it is not password protected.

## Evacuating to a Safe Location

Here are some of the signs to look for during disasters.



### Evacuation Sites

Large spacious areas, such as parks and sports grounds, act as temporary evacuation sites during a disaster.



### Shelters

Schools, community centers, etc. can serve as shelters if housing is unavailable during a disaster.



### Above Sea Level Signs

These signs show how many meters the location is above sea level. In the case of a tsunami, use these signs to evacuate to higher ground.

Write down the nearest evacuation sites and shelters on P.11



### What are shelters like?

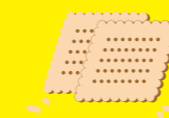
- 1 Basic necessities such as food and blankets are provided.
- 2 If you have trouble understanding Japanese, inform the staff you wish to go to a shelter with interpreters.
- 3 It is important to follow the rules of the shelter and respect everyone there.

## Preparing Emergency Supplies

Make preparations according to your dietary restrictions.



Water



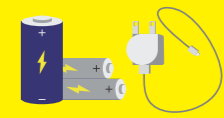
Crackers, biscuits



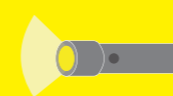
Nuts, dried fruits



Instant noodles



Batteries, chargers



Flashlight



First-aid kit



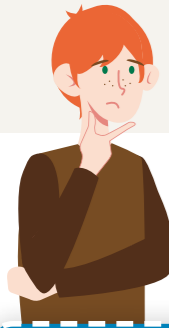
Medication



Copy of passport or residence card



Keep these supplies in a backpack.



# Useful Japanese Phrases

These are our top choices!



## International Students of Meiyuu Japanese Language School

We are study-abroad students from Vietnam currently living in Chiba Prefecture. In our daily lives, we've faced countless struggles, from not understanding Japanese to getting lost and even getting injured. Here are some Japanese phrases that we thought would be useful based on our experiences.

だいじょうぶ  
**大丈夫**  
daijobu  
||  
*It's fine*

お  
**落ち着いて**  
ochitsuite  
||  
*Calm down*

ゆっくり  
yukkuri  
||  
*Slowly*

いた  
**痛い**  
itai  
||  
*It hurts*

あぶ  
**危ない!**  
abunai  
||  
*Watch out*

たす  
**助けて**  
tasukete  
||  
*Help*

た  
**食べられません**  
taberaremasen  
||  
*I can't eat*

# Calling for Help

It is important to know who to contact in the event of an accident or injury.

Traffic accident, crime



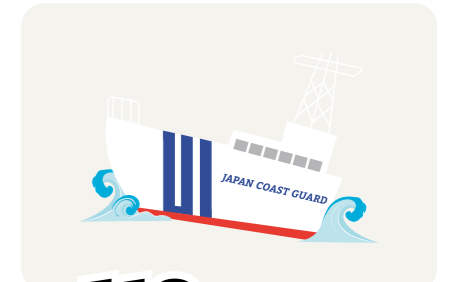
CALL **110** Police

Fire, sudden illness, serious injury



CALL **119** Fire Department / Ambulance

Maritime crime, accident



CALL **118** Japan Coast Guard

Emergency numbers can be reached from mobile phones or payphones toll-free.

## Inquiries regarding passports



Contact the embassy or consulate of your country.

## Inquiries about status of residence

For those living in Chiba Prefecture

Tokyo Regional Immigration Services Bureau Chiba Branch Office

Chiba Chuo Community Center,  
2-1 Chibaminato, Chuo-ku, Chiba City

Call 043-242-6597

Tokyo Regional Immigration Services Bureau Matsudo Branch Office

KITE MITE MATSUDO 8F  
1307-1 Matsudo, Matsudo City

Call 047-701-5472

## If you encounter any trouble while living in Chiba Prefecture...

Chiba Consultation Service for Foreign Residents (Chiba International Center)

14F Makuhari Techno Garden D Bldg., 1-3 Nakase, Mihama-ku, Chiba City

TEL **043-297-2966**

Open Monday - Friday (excluding New Year's and public holidays)  
9AM-12PM, 1PM-4PM

NHKスクープBOX



NHK airs videos of accidents and disasters sent in by viewers on news programs. If you are able to record such videos, please send them to NHK Scoop Box, accessible through the QR code on the left. Please ensure your own safety when recording such videos.





# NHK WORLD-JAPAN

NHK WORLD-JAPAN is the international service of Japan's public media organization NHK. It provides the latest information on Japan and Asia through television, radio and online to a global audience.

|                    |                         |                           |                                |                                |
|--------------------|-------------------------|---------------------------|--------------------------------|--------------------------------|
| Arabic<br>العربية  | Bengali<br>বাংলা        | Burmese<br>မြန်မာဘာသာစကား | Chinese(simplified)<br>中文(简体)  | Chinese(traditional)<br>中文(繁體) |
| English<br>English | French<br>Français      | Hindi<br>हिन्दी           | Indonesian<br>Bahasa Indonesia | Korean<br>코리언                  |
| Persian<br>فارسی   | Portuguese<br>Português | Russian<br>Русский        | Spanish<br>Español             | Swahili<br>Kiswahili           |
| Thai<br>ภาษาไทย    | Turkish<br>Türkçe       | Ukrainian<br>Українська   | Urdu<br>اردو                   | Vietnamese<br>Tiếng Việt       |

## NEWS



Check our app, website and facebook account for the latest news.



## Learn Japanese



Study Japanese at your own pace with reliable and practical language learning materials from NHK WORLD-JAPAN programs and websites.



## PROGRAMS



### Living in Japan

Hints and tips for international residents in Japan to help you fit right in.



### CYCLE AROUND JAPAN

Come ride with us! Bicycle through the scenery of Japan, stay with locals and discover hidden traditions in a Japan you didn't know existed.



### Kids Edutainment

Nurture the inquisitive minds of children by delving into a treasure trove of English expressions with NHK's educational programs.



## Notes

### Nearest evacuation site / shelter:

---

---

### Emergency contacts:

---

---

---

---

## Supported by viewers

### Do you have a Broadcast Receiving Contract with NHK?

NHK is Japan's sole public broadcaster established under the 1950 Broadcast Law of Japan. Under this law, NHK must be operated based on fees levied fairly on all viewers. Every owner of a television set, regardless of nationality, is required to enter a broadcast receiving contract with NHK, and to pay a receiving fee.

Please contact our team at

# 0120-151515 (toll-free)

to create or update your broadcast receiving contract if you:

- buy a TV set for the first time
- set up your TV for satellite broadcasting
- no longer own a TV set, or
- plan to change/have changed residence



What's the name of this NHK character?



This is Domo. He only says "Domo," which is a versatile greeting expression in Japanese.



# Disaster Alert App

Push notification for earthquake & tsunami alerts

じしん つなみ じょうほう 地震や津波の情報をアプリのプッシュ通知でお知らせ



下载 NHK WORLD-JAPAN App 接收地震及海啸警报

Download NHK WORLD-JAPAN App to receive earthquake and tsunami alerts

Tải xuống ứng dụng NHK WORLD-JAPAN để nhận cảnh báo động đất và sóng thần

Baixe o aplicativo NHK WORLD-JAPAN para receber alertas de terremoto e tsunami

Download the App

アプリのダウンロードはこちらから



GET IT ON  
Google Play

Download on the  
App Store

Scan for more info



せっていしかた  
設定の仕方はこちら

扫码查看设置方法

掃碼查看設定方法

Quét để biết thêm thông tin

Digitalize para obter  
mais informações

In cooperation with

Chiba Convention Bureau and International Center, Chiba Prefectural Government, Chiba Prefecture Inn (Ryokan) Hotel Life and Hygiene Association, CHIBA UNIVERSITY, Kanda University of International Studies, Meiyuu Japanese Language School

Photos provided by

Chiba Prefectural Government, Chiba Prefectural Inn (Ryokan) Hotel Life and Hygiene Association, Chiba Prefectural Tourism & Local Products Association