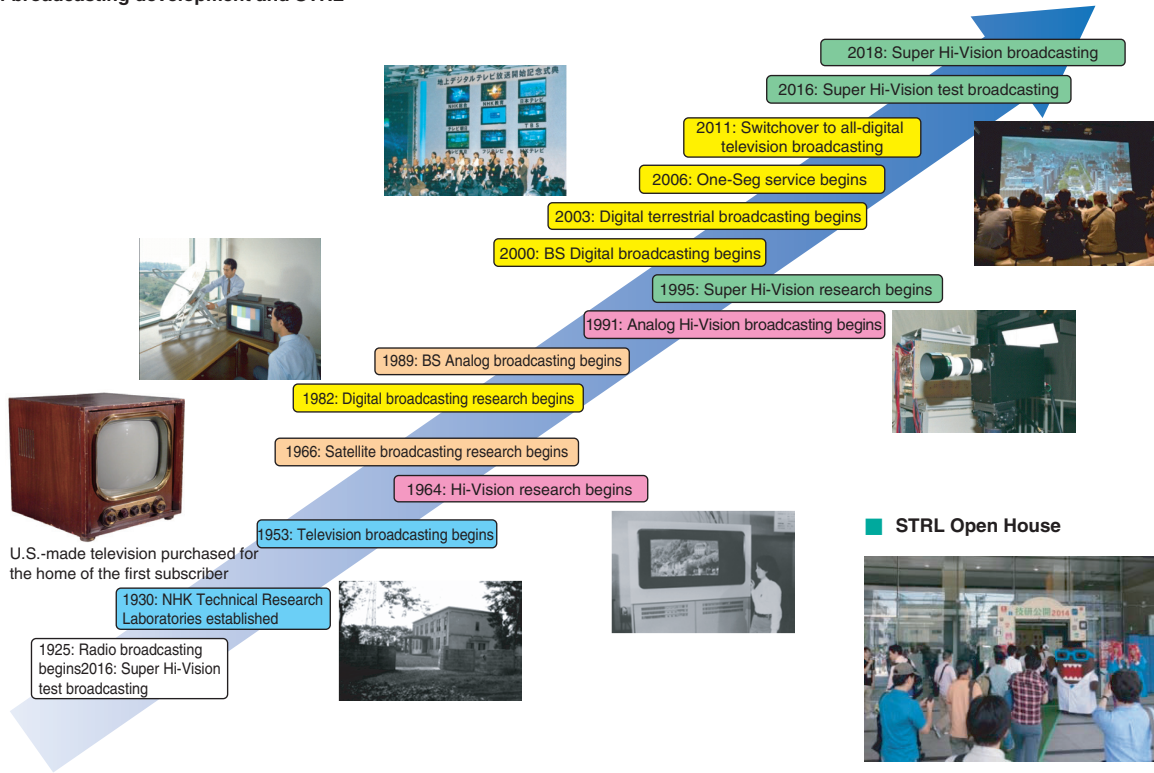


NHK Science & Technology Research Laboratories Outline

The NHK Science & Technology Research Laboratories (NHK STRL) is the sole research facility in Japan specializing in broadcasting technology and, as part of the public broadcaster NHK, its role is to lead Japan in developing new broadcasting technology and contributing to a rich broadcasting culture.

History of broadcasting development and STRL



STRL Open House



The STRL Open House is held every year in May to introduce our R&D to the public.

STRL by the numbers

Established in June 1930	Technical Research Laboratories
June 1930 - January 1965	Technical Research Laboratories,
January 1965 - July 1984	Broadcast Science Research Laboratories
July 1984 - Present	Science & Technology Research Laboratories
Employees 255	(including 227 researchers)
Degree-holding personnel	88
Patents held: Domestic	1,788
(NHK Total) International	176

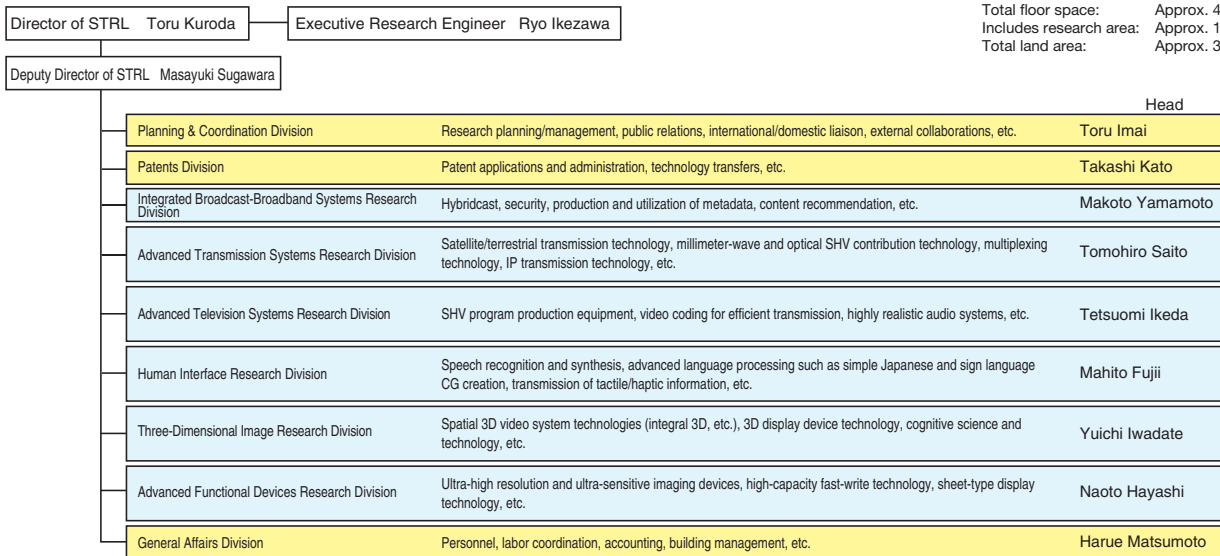
(at end of FY2014)

Current research building



Completed March 2002
 High-rise building:
 14 floors above ground, two below ground
 Mid-height building:
 6 floors above ground, two below ground
 Total floor space: Approx. 46,000 m²
 Includes research area: Approx. 16,000 m²
 Total land area: Approx. 33,000 m²

NHK STRL Organization



(at end of FY2014)