



LESSON 43 どうしてでしょうか DÔSHITE DESHÔ KA

先生 ひめじじょう きせき しる い
先生 姫路城は奇跡の城とされています。

Teacher どうしてでしょうか。

HIMEJI-JÔ WA KISEKI NO
SHIRO TO IWARETE IMASU.
DÔSHITE DESHÔ KA.

Himeji Castle is said to be a
miracle castle.

Why do you think it is?

ロドリゴ 戦争でも焼けなかったからです。

Rodrigo SENSÔ DEMO YAKENAKATTA
KARA DESU.

Because it has never burned
down even in wars.

アンナ さすが、ロドリゴ！

Anna SASUGA, RODORIGO!

Great, Rodrigo!



Grammar Tips

① _ DESHÔ (probably _)

- ◆ You use DESHÔ at the end of a sentence, when you talk about a prediction for the future or something uncertain.

e.g.) ASHITA WA AME DESHÔ.

(It will probably rain tomorrow.)



Himeji Castle

© Himeji City

② DÔSHITE DESHÔ KA (Why do you think it is?)

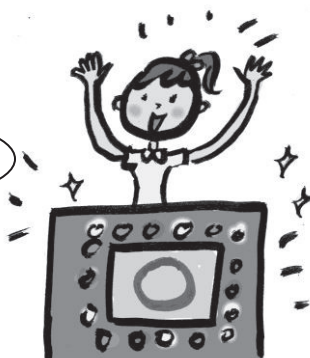
- ◆ DÔSHITE means "why." To make DÔSHITE formal, use NAZE (why). ⇒ NAZE DESHÔ KA

... ㄟ ㄟ ... ㄟ ㄟ ... ㄟ ㄟ ... ㄟ ㄟ ... ㄟ ㄟ ... ㄟ ㄟ ... ㄟ ㄟ ... ㄟ ㄟ ... ㄟ ㄟ ... ㄟ ㄟ ... ㄟ ㄟ ... ㄟ ㄟ ...

Sound Words



PINPÔN



BÛ



It is the sound used for a right answer.

It is the sound used for a wrong answer.